

GAME. CHANGED.

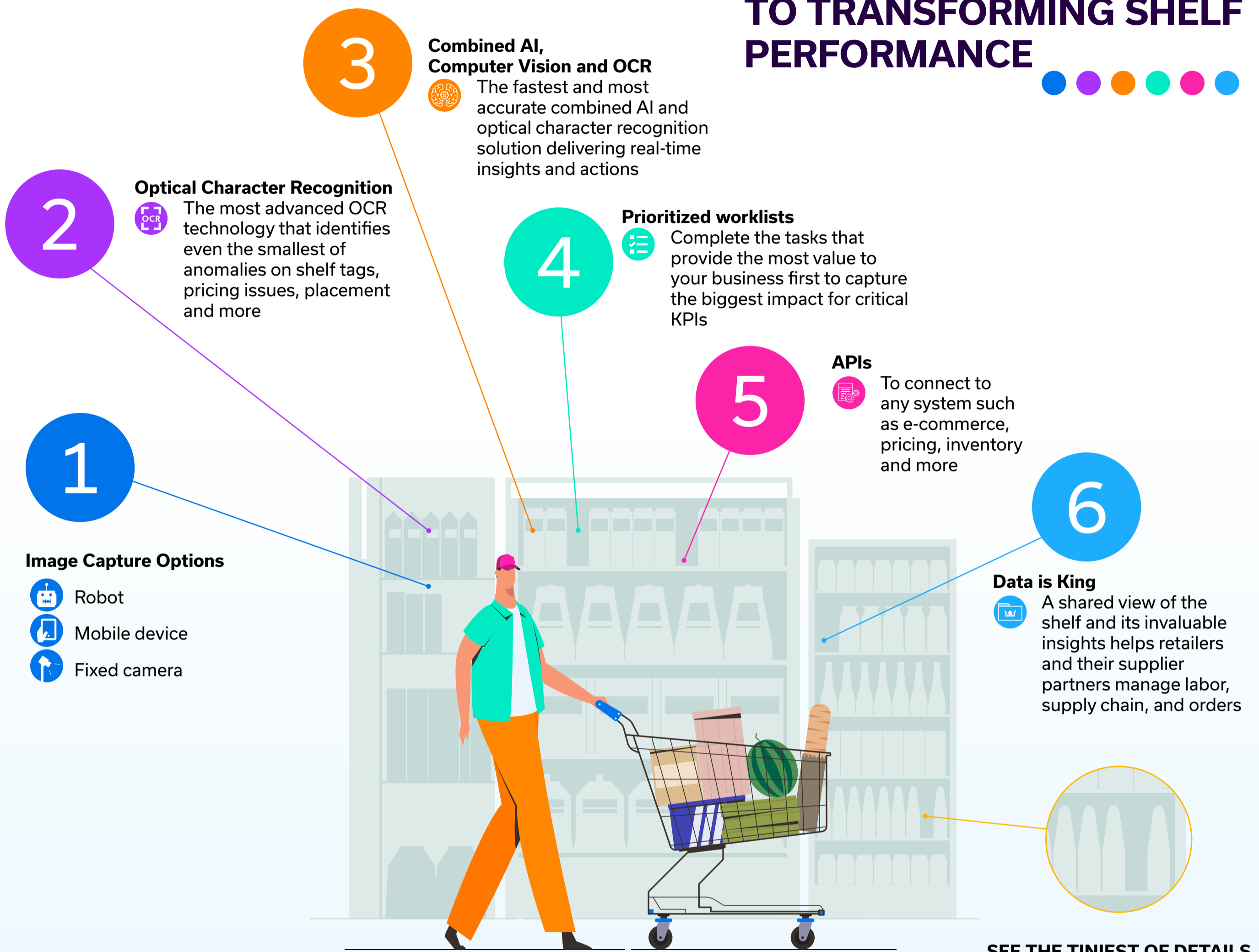
See your shelves in real-time with unprecedented accuracy

Even the best laid planograms run into issues in busy stores. Accurate sales data may take weeks to get to HQ, inventory issues can be hard to diagnose, and associates may too busy to address shelf discrepancies or errors as they occur. A problem for too long, the lack of real-time shelf insight costs billions.

The bill for out-of-stocks alone for global retailers is huge.

\$984 billion in lost sales

OUR 6-STEP APPROACH TO TRANSFORMING SHELF PERFORMANCE



SEE THE TINIEST OF DETAILS

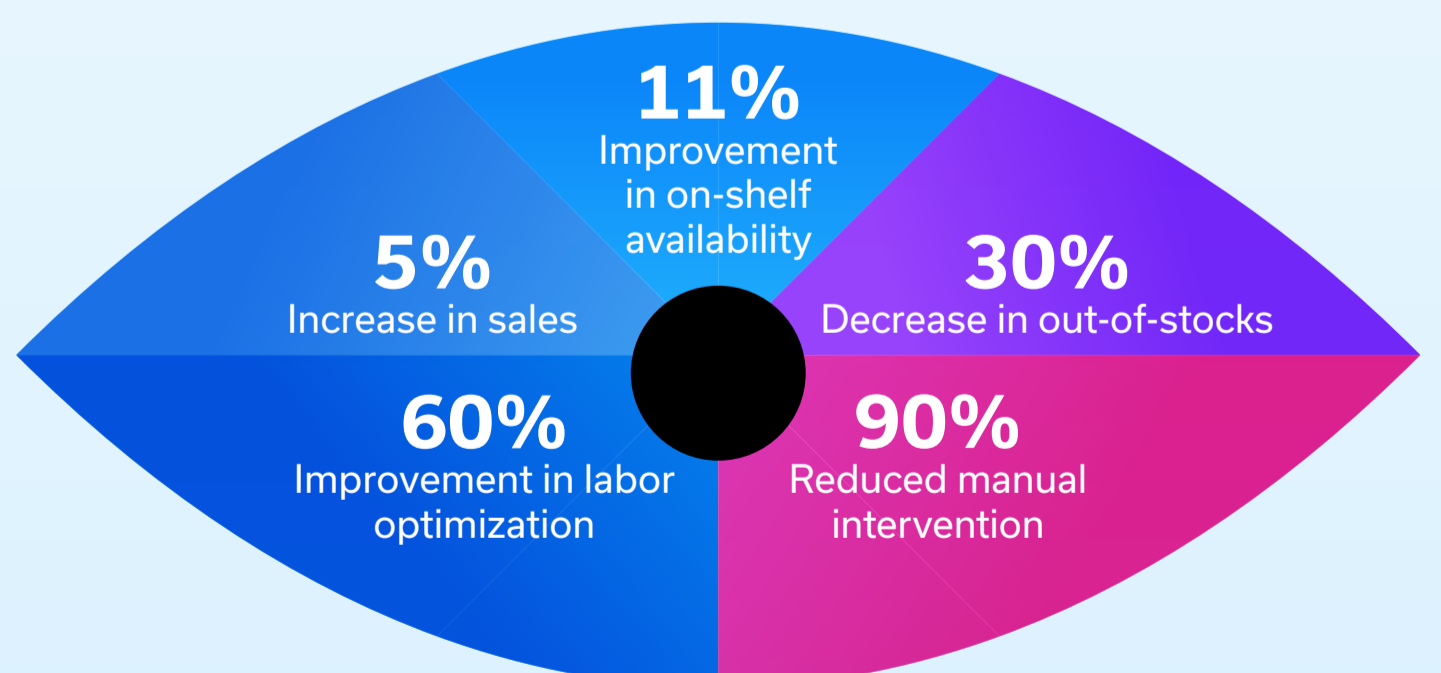
Store Intelligence sees with greater accuracy than the human eye to spot errors that associates might miss such as missing tags, misplaced items, incorrect prices and more.

VISION BRINGS VALUE

With our AI-powered Store Intelligence solution you can see what's happening on your shelves in real-time. With this realogram view, you can dynamically execute against planograms, and amend errors as they occur such as out-of-stocks, misplaced items and price tag issues.

Endlessly scalable across any number of stores, the solution has over 1 million SKUs built into its image recognition library, and with a cloud-based architecture, we can have pilots up and running in your stores in 90 days. What you can see you can improve, and our customers report eye-catching results.

- Optimize planogram compliance
- Enhance planogram creation
- Detect out-of-stocks
- Detect shelf anomalies
- Ensure pricing accuracy, and compliance
- React at speed to opportunities
- Improved inventory planning
- Prioritized worklists for your teams



To see how our more immediate, agile, and data-driven approach to shelf management could similarly transform your operations and help you get much more from your most valuable assets, contact us at:

info@symphonyretailai.com